

Instant Gigabit Series

Instant Gigabit Network Adapter

Model No.: EG1032
EG1064

Quick Installation

for Windows 95

This sheet will guide you through the basic steps needed to install the Instant Gigabit Network Adapter onto your network. If you have any problems during installation, refer to the **Troubleshooting** section of the **User Guide**.

Overview

After installing the Instant Gigabit hardware in your PC, follow these instructions to install the adapter driver. The installation procedure for the adapter driver will vary slightly, depending on the version of Windows 95 you are using. If you experience any difficulty, refer to your User Guide for more information.

Note: Do not click **Cancel** or **Skip** at any time during the installation. Doing so will prevent the driver from being properly installed on your PC.

Installing Your Instant Gigabit Network Adapter Drivers

1. **Start up your PC.**
2. **Windows 95 will automatically detect** the Network Adapter in your computer. If the *Update Device Driver Wizard* window appears, you are using Windows 95 version B. If a window other than this appears, you are using Windows 95 version A. For Windows 95 version A driver installation, refer to the Appendix of the User Guide.



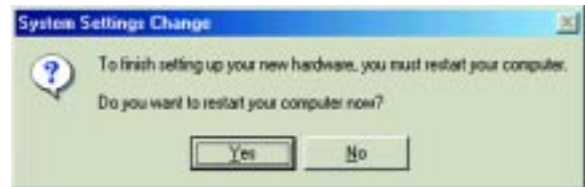
3. While the *Update Device Driver Wizard* window is visible, insert the **Instant Gigabit Network Adapter Driver Disk** into your floppy drive and click the **Next** button.
4. Windows 95 will find the *Linksys EG1032/EG1064 Instant Gigabit Network Adapter* driver on the disk. Click the **Finish** button to continue. If Windows fails to find the driver, click the **Other Locations** button to browse for the driver.
5. If you clicked the **Other Locations** button, enter **a:\win95** in the Window that appears. Windows will begin copying the Network Adapter's driver files to your PC.

6. Once Windows has located the drivers, the following window will appear. To use this driver, click the **Finish** button.



At this point, the installation may require files from your Windows 95 CD-ROM. If prompted, insert your Windows 95 CD-ROM into your CD-ROM drive and enter **d:\win95** in the box that appears (where "d" is the letter of your CD-ROM drive). If you were not supplied with a Windows 98 CD-ROM, your Windows files may have been placed on your hard drive by your computer manufacturer. While the location of these files may vary, many manufacturers use **c:\windows\options\cabs** as the path. Try entering this path into the box. If no files are found, check your computer's documentation or contact your computer manufacturer for more information.

7. Once the driver is installed, the **Advanced Settings** screen will appear. The default settings should allow the Adapter to function properly. Click the **OK** button to continue. For more information about these settings, refer to the **Advanced Settings** section of the User Guide.
8. When asked if you want to restart your PC, remove all disks from your computer's drives and click the **Yes** button. If Windows does not ask you to restart your PC, click the **Start** button, choose **Shut Down**, choose **Restart**, then click **Yes**.



The Windows 95 Version B driver installation is complete. Refer to the section in your User Guide on Configuring the Instant Gigabit Network Adapter for Windows 95, 98, and Millennium for more information about the setup of the Adapter.